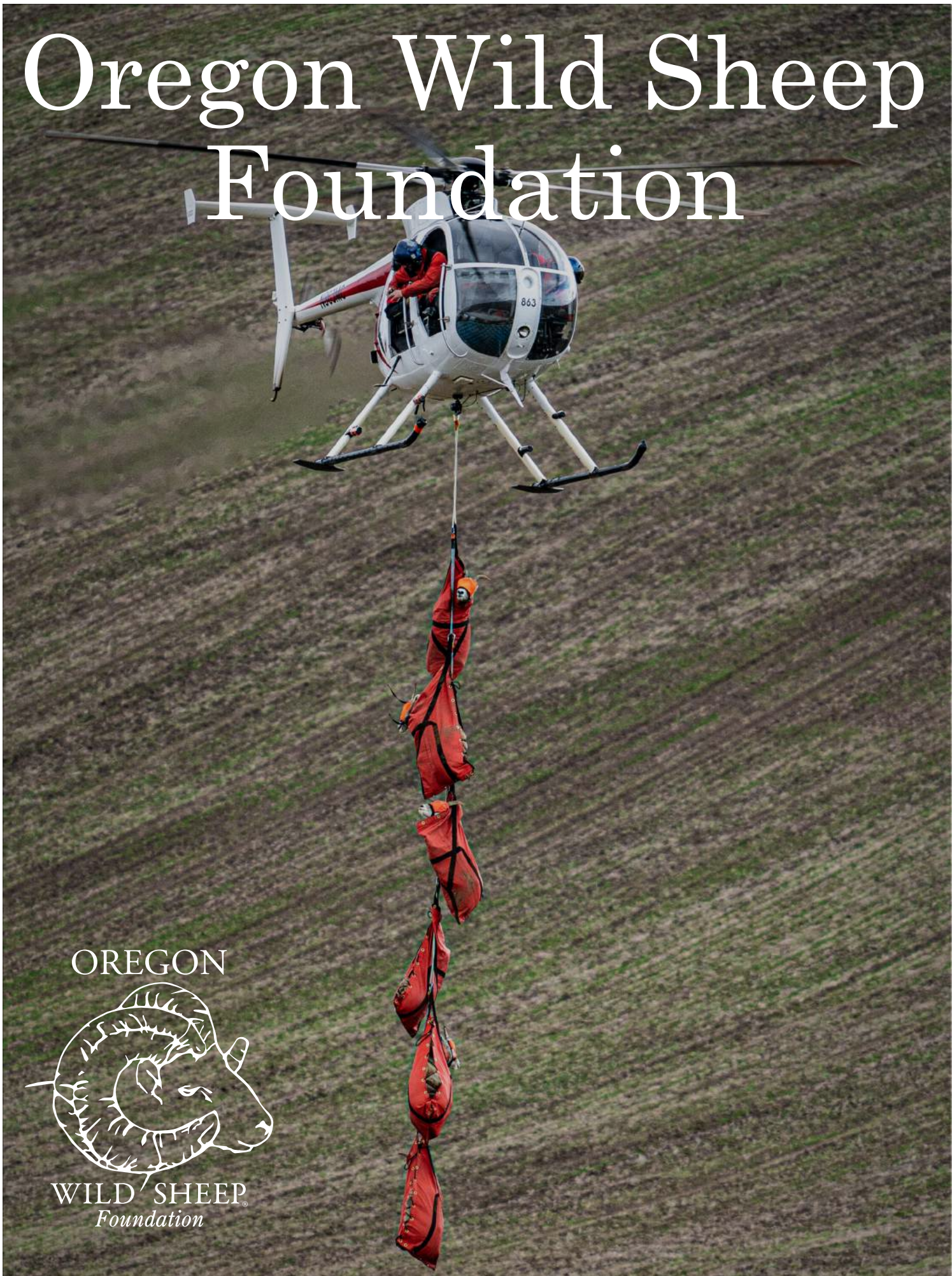


Oregon Wild Sheep Foundation



OREGON



WILD SHEEP
Foundation

Winter 2023

Officers & Board

President: Walter Chuck Jr.Term Expires 2024
1st Vice President: Kevin Martin.....Term Expires 2024
2nd Vice President: Craig Foster.....Term Expires 2023
Treasurer: Marcus Gores.....Term Expires 2025
Secretary: Liz Wurdinger.....Term Expires 2025

Board:

Walter Chuck Jr., Kevin Martin, Craig Foster, Marcus Gores, Liz Wurdinger,, Zach Peterson, Tom Peterson, Vic Coggins, Larry Jacobs, Shane Byerly, John McCollum III, David Geelan, Don South, Brent Tannock, Ray Wurdinger.

Newsletter Production:

Editor in Chief: Marcus Gores

Editor: Kevin Martin

If you would like to inquire about advertising space in our quarterly newsletter, please reach out to Info@oregonfnaws.org for availability and pricing

Newsletter

WINTER 2023

1-2 *ORGANIZATION INFO*

3-4 *PRESIDENT'S MESSAGE*

5 *2023 ANNUAL BANQUET*

8 *MEMBERSHIP WELCOME*

9-10 *MANAGING M.OVI*

12-16 *GOVT & LEGISLATIVE*

17-18 *JUNIPER CUT PROJECT*

19 *VOLUNTEERS NEEDED*

23 *UPCOMING EVENTS*

3 President's Message

WALTER CHUCK



Walter Chuck Jr. and Donald C. Martin with
Walter's ram in 2012

OR-WSF is starting off the new year with a lot of things going on. There have been 2 Bighorn Sheep captures so far with 3 more to be conducted in the first part of March. A couple of our board members were fortunate to have been able to participate in one of the captures on Hart Mountain earlier this year. We are hoping to have a couple more of them participate in the 3 upcoming captures along with some of our ODFW Commissioners and legislators. Having them participate gives us an opportunity to show them what we do, who we work with and share our passion for Bighorn Sheep.

Some of our members just returned from our Juniper cut on the Schneider Wildlife area after a 3 year hiatus. The cut was well attended with 15 long time participants, many junipers were dropped to improve habitat for wildlife. A big Thank You to new ODFW employees Joe and Jake for the extra effort they put in to feed us, delivering breakfast and lunch from the Dayville Café and cooking Dinner for us on Saturday Night. Please be sure to check your inbox for upcoming project opportunities.

OR-WSF was fortunate to receive over \$400,000 in grants from WSF National and those funds are being allocated to Hells Canyon, Hart Mountain and our new Idaho, Oregon and Nevada(ION) partnership. The work that these funds will be supporting is ongoing and vital to supporting Bighorn Sheep conservation. OR-WSF and its partners will be applying for these funds on a yearly basis. I would like to thank the people who spend their time compiling the data and filling out the applications.

OR-WSF has been working with other Hunting groups and the Congressional Sportsmen's Foundation in the ongoing court battle in opposition to Measure 114.

If you are in Bend area 3/8-12 please stop by the Central Oregon Sportsman's Show and say Hi. Our 4/29 Banquet tickets are going fast so don't miss out on a great event. We still have tickets available for our Gana River Dall Sheep hunt.

Our membership drive is still going on, new members will be eligible for a new Weatherby rifle.

Lastly we wish longtime volunteer and board member Tom Van Grunsven a speedy recovery.

Walter Chuck

ORWSF President

5 | 2023 Annual Banquet

We are officially SOLD OUT! Every ticket for the annual banquet has been sold. If you wish to be placed on the waiting list for any tickets that become available, email us at info@oregonfnaws.org requesting to be placed on the waiting list. This will be first come first serve.

For those who have purchased tickets or tables we will be following up with information on schedule, confirming attendees (if you did not fill out complete list of attendees when purchasing), and room block information.

Rooms within the room block are almost gone as well so please get your reservations ASAP.

To book special room rates, please call 1-866-453-4480 and let reservation specialist know you will be attending the Oregon Wild Sheep Foundation Banquet.

OR WSF 22nd Annual Banquet

WHEN: April 29th, 2023

**WHERE: RiverHouse on the Deschutes
Bend, Oregon**

WHO: All of you!

OREGON WILD SHEEP FOUNDATION

22ND ANNUAL BANQUET

RiverHouse On The Deschutes

Bend, OR

April 29th, 2023

SCAN FOR TICKET



Live Auction
Silent Auction
Wall of Guns

Door Prizes
Raffle Prizes

Dinner

Drinks

Statewide Deer Tag

For Info/Tickets visit:

www.OregonFNAWS.org



Dan Epp
DAN EPP PHOTOGRAPHY

What separates posers from the real deal?



← This badge.

Only 2% Certified™ brands can prove their commitment to conservation. It's about accountability.

To the wildlife your business depends on.
To your customers. To your legacy.

We don't dictate where or how you give to wildlife.
We certify that you've done it.

With members worldwide, the sun doesn't set on the measure of a True Conservationist:
1% Time + 1% Money = 2% for Conservation

Make your mark, prove your effort: fishandwildlife.org

Membership Welcome Note

Marcus Gores

YOU! Yes you! We are so glad to have you as a member. Whether that be an individual annual, Family annual, or life member we want you to know just how much we appreciate you. Our membership is growing and you folks are the reason behind our growth. With over 200 life members and over 100 subscribed annual members we are setting new goals and want to appreciate your commitment to our organization and wild sheep and mountain goats in Oregon.

If this is the first newsletter you are receiving, welcome. You are now apart of an amazing family that cares for wild sheep and mountain goats and share the same passion to put and keep sheep and goats on the mountain.

We are planning a membership drive from our subscribing annual members (both individual and family). We are putting together a rifle to raffle off to current active members who have either signed up new or renewed their membership between the dates of January 1st 2022 and April 29th 2023. We will be drawing the winner live at our annual banquet so make sure to get there because you have the opportunity to go home with a brand new Browning X-Bolt! Annual members do NOT need to be present to win though it is highly encouraged to attend the banquet!

What your membership does; annual members who subscribe help fund our operating expenses and small projects that we perform boots on the ground. Life member funds go directly towards project and emergency funding for sheep. This is typically in emergency situations where we need to test for disease, help ODFW with large funding, or assist other chapter and affiliates with their emergency needs like our most recent contributions to Nebraska wild sheep for trap and transplanting them to keep them away from domestic herds at the possible chance of disease outbreak.

Our board and volunteers are all nonpaid. 100% of your membership and donations go directly back into sheep and goat conservation and truly we couldn't do it without you! And that is why we want to give back to you folks.

Don't worry life members, we also have a great life member gun we will be raffling off at the banquet. This raffle is a bit different as you MUST be present to win. So make sure to get your banquet tickets early and ensure your membership is up to date!

Make sure you are current with your membership, and you can win this rifle in April!



Managing *Mycoplasma ovipneumoniae* (M.ovi) in Bighorns along the Oregon/Nevada Border

Scott Torland – ODFW Assistant District Wildlife Biologist

Managing *Mycoplasma ovipneumoniae* (M.ovi) in Bighorns along the Oregon/Nevada Border.

Bighorn sheep that roam the Santa Rosa Mountains in Nevada and up into Oregon's Ten Mile and Rattlesnake Herds have been struggling with M.ovi for over a decade. M.ovi is a disease that, once introduced into bighorns, can cause an all-age die off, remain chronic in the population, and cause reduced lamb recruitment for years to follow. These herds can support over 600 bighorns collectively but now have less than 200 individuals between them. Without the removal of chronic-shedding bighorns, these herds will remain stagnant at best. Thus, ODFW joined NDOW on a test and removal project with the intent of eliminating M.ovi from bighorns that move between the two states.

Simply put, test and removal is a process of capturing as many bighorns as possible within a population, testing them for M.ovi, and removing those actively shedding the disease. This sounds easy, but helicopter-wary bighorn are difficult for capture crews to find and immobilize as the sheep improve their ability to recognize and retreat from the aircraft. Ideally, each bighorn captured gets a GPS or VHF collar to identify the individual and are released. As test results become available, those individuals that come back positive are removed.

Nevada started test and removal in August 2021, having completed three captures, sampled 77 bighorns and removed 8 sheep to date. Oregon has completed captures in January 2022 and 2023, sampling 76 bighorns and removing 7 sheep to date. Lambs exposed to M.ovi typically die within the first eight weeks of life. Thus, lamb recruitment is an indicator of the presence of M.ovi remaining in the herds. Lamb surveys performed last summer showed mixed results in both states. This summer the herds will be monitored with the hopes of improved lamb survival. Success will be when lambs present in the populations survive their first eight weeks, are sampled for M.ovi, and produce negative tests. This may take another several years and the commitment of both states in seeing the project to the end.



KNOW WHERE YOU STAND

TRUSTED BY BIG GAME HUNTERS

For more information on the most comprehensive hunting maps available visit: [ONXMAPS.COM/HUNT](https://onxmaps.com/hunt)

Government & Legislative Affairs

Kevin Martin

October 7, 2022 – Midwest Chapter WSF - Funding Support for the Minam Wildlife Area Acquisition – Phase 2 – with a donation of \$25,000!!

Thank you, Midwest Chapter Members, for this amazing donation to go toward this purchase!!

ODFW has purchased the first phase of a large land acquisition in Northeast Oregon and is working on the second phase. The entire project will acquire 15,573 acres of critical fish and wildlife habitat and establish the Minam River Wildlife Area to be managed by ODFW.

OR WSF strongly supports the purchase. We have provided testimony and a donation of funds, with a second donation coming this year. The 2nd Phase - the Minam River State Wildlife Area Acquisition will link wildlife habitat from the Wallowa-Whitman National Forest (WWNF) to the Minam State Recreation Area. This acquisition will assure permanent protection of crucial habitat along a migration corridor for bighorn sheep, elk, mule deer, and other wildlife and will conserve approximately 160 miles of streams, including a significant stretch of the Minam River.

Acquisition of this property will secure public recreational access to the area and improve access to adjacent WWNF and Bureau of Land Management lands. Multiple recreational interests will have access to a remote, rugged, amazing landscape.

November 21, 2022 - Washington Department of Fish and Wildlife - Subject: Domestic Sheep/Goats on Washington State Department of Fish and Wildlife (WDFW) Lands.

The Oregon Wild Sheep Foundation (OR WSF) is closely following the Washington Department of Fish and Wildlife (WDFW) process regarding management of domestic sheep and/or goats on WDFW properties. OR WSF is writing in support of prohibiting domestic sheep and goats on WDFW property near any bighorn sheep populations. In addition, we requested that the State of Washington look at all state managed lands and evaluate whether the use of those properties by domestic sheep and/or goats would pose a threat to bighorn sheep.

We are interested in the management of bighorn sheep populations across Washington but have specific interest in those populations along the southern border, which have potential to affect Oregon bighorn sheep populations or whose herd home ranges that include multiple states.

Multiple bighorn sheep populations in the Hells Canyon (ID, OR, and WA) area have experienced high rates of mortality due to pneumonia outbreaks. The origin of these outbreaks has been documented as domestic sheep and/or goat strains of *Mycoplasma ovipneumoniae* (Movi); which continues to have lingering effects. Many of these populations have not recovered, and are currently limited by low lamb survival, primarily due to persistent pneumonia caused mortality. Pathogen transmission to bighorn sheep is controlled by maintaining separation between bighorn sheep and domestic sheep and/or goats.

Regarding domestic/wild sheep conflicts, WDFW's policy and direction should be to: (1) achieve effective separation of domestic sheep and/or goats from wild sheep, and (2) to minimize risk of contact between the species.

Domestic sheep and goats carry pathogens that are deadly to wild sheep. It is not worth the risk to Washington's, and nearby bighorn sheep populations in Oregon and Idaho by allowing domestic sheep and goats on WDFW managed lands where bighorn sheep populations could be at risk. It took approximately 25 years to overcome the devastation (and rid the herds of *Mycoplasma ovipneumoniae*) caused in the greater Hells Canyon bighorn populations from the die-off that began near Asotin in 1995 and impacted populations in Idaho and Oregon as well. WDFW should conduct a comprehensive risk analysis prior to allowing domestic sheep or goats on any WDFW managed property. An example of this kind of analysis can be found in Appendix L. of the Payette National Forest Bighorn Sheep Viability Forest Plan Amendment Final Supplemental EIS (https://www.fs.usda.gov/detailfull/payette/landmanagement/?cid=fsm9_033278&width=full).

We fully respect the access sought by those that use domestic goats as pack animals. However, it is simply not worth the risk to bighorn sheep populations. Best Management Practices are NOT foolproof and still put bighorns at risk. There is a place for pack goats but NOT near bighorn sheep! It only takes one incident to have catastrophic consequences that could take decades to overcome.

Government & Legislative Affairs

Sportsmen for the Owyhee:

December 1st, 2022 - The Honorable Joe Manchin Chairman United States Senate Energy and Natural Resources Committee, The Honorable John Barrasso Ranking Member United States Senate Energy and Natural Resources Committee – Malheur Community Empowerment for the Owyhee Act (S. 4860).

On behalf of the Owyhee Sportsmen Coalition (OR WSF is a member), including hunting and fishing organizations that represent more than 25,000 sportsmen and women in Oregon, we suggested improvements needed to the Malheur Community Empowerment for the Owyhee Act (S. 4860). This important legislation aims to find collaborative solutions for the social and economic well-being of Malheur County and ensure benefits to fish, wildlife, and the local outdoor recreation economy.

Known for its picturesque landscape, with thousand-foot sheer cliffs and volcanic tuff formations, Oregon's Owyhee canyon country is home to native redband rainbow trout, chukar, mule deer, elk, pronghorn antelope, and California bighorn sheep. The Owyhee region is recognized as one of the last remaining strongholds of intact sagebrush steppe habitat which supports Oregon's largest population of greater sage grouse.

In Oregon's congressional district #2 which includes all of Malheur County, more than 49,000 hunters and shooters spent \$107 million dollars in 2020 and supported 888 jobs. Hunters and anglers value this wildlife-rich landscape and are working locally with important stakeholders to discuss the best way to secure longterm conservation policies that protect its rugged character, solitude, and the hunting and angling opportunities that drive our family traditions and local economies.

We believe that the Owyhee Plateau is a landscape that should be safeguarded for future generations of American sportsmen and women and we appreciate Senator Wyden's efforts to bring diverse stakeholders to the table to discuss ways to protect the Owyhee canyon country and the multiple uses it supports. Our organizations support the multiple uses of public land in this region and recognize that good stewardship means sustainable ranching, wildlife habitat management, public access, and meaningful resource conservation.

As one of the premier destinations for sportsmen and women in Oregon, the Owyhee canyonlands demand permanent protection of our hunting, angling, and outdoor recreation heritage. Senator Wyden is working hard to craft a bill that provides those protections, and we are supportive of S. 4860 overall but would like to see some adjustments and additions. We support the components of the bill related to economic development, community input, flexible grazing, and Wilderness designation. Access is important for management activities by land managers as well as hunters, anglers, and permittees. From a hunting and angling perspective there are some areas of the bill where we believe language could be added to improve the benefits for fish and wildlife. We provided a brief summary of our recommended changes (see below), and we would be happy to provide additional context at any time.

We appreciated that the Senate Energy and Natural Resource Committee did hold a hearing on this legislation. The hearing will provide a great opportunity for feedback and possible improvements to the bill. We remain committed to working with this Committee, Congress, and the Administration to ensure that S.4860 achieves its promise for public lands, fish and wildlife, and the Malheur County economy.

Owyhee Sportsmen Coalition Recommended Bill Revisions:

Note: red text below represents our recommended additions or changes to the bill text.

Grazing and Wildlife:

Domestic sheep grazing and trailing within occupied bighorn sheep habitat has been shown to be one of the leading threats to the native species. In 2015, disease spread by domestic sheep caused a widespread die-off of native bighorn sheep within the Owyhee canyon and reduced the once healthy population by more than 90%. The future health of bighorn sheep within the Vale District BLM will require continued monitoring and associated management of disease transmission between domestic and recreational livestock (pack goats) and wildlife.

- Recommendation 1: Add language that requires analysis and monitoring of potential disease risks and disease transmission between domestic livestock, recreational livestock and wildlife and transmission within species. To do this, the bill should add language to ensure the BLM follows existing BLM policy 1730 "Management of Domestic Sheep and Goats to sustain Wild Sheep"
- Recommendation 2: Page 2 Lines 12-15. Reword the definition of 'long term ecological health'. ".....including an ecologically appropriate diversity of plant and animal communities, wildlife habitat and connectivity, and conditions that are sustainable through successional processes."

CEO Group:

Recommendation: Page 10 lines 9-12. Reword to "(ii) 3 shall be representatives of other businesses or conservation, wildlife, or recreation organizations in the County, of whom at least 2 shall reside in the county. We also recommend term limits for members of the advisory group be limited to two three-year terms under subsection (2)(iv). This prevents a monopoly and gives other stakeholders an opportunity to be represented on the committee. REAPPOINTMENT.—A member of the Malheur CEO Group may be reappointed for not more than 1 additional 3-year term."

Wilderness Management:

Hunters and anglers value Wilderness and we also acknowledge that the sagebrush-steppe habitat in the Owyhee is an ecosystem that at times may require active management to improve, restore and/or maintain the resilience of intact fish/wildlife habitat. We encourage Senator Wyden and the Committee to add in language within the bill that would enable additional flexibility for the BLM to perform active management for fish and wildlife and/or their habitats if the need arises within Wilderness.

- Recommendation 1: page 24, Line 4. Reword to "B) GRAZING.—The Secretary shall allow the continuation of the grazing of livestock. Including the maintenance, construction, or replacement of authorized livestock and wildlife facilities, in the wilderness areas....."
- Recommendation 2: Page 24 lines 19-24. Reword to "C) FIRE MANAGEMENT AND RELATED ACTIVITIES.—The Secretary may carry out any activities in the wilderness areas that the Secretary determines to be necessary for the control of fire, insects, postfire ecological restoration efforts, and diseases, in accordance with....."
- Recommendation 3: Add in a section for managing wildlife within Wilderness similar to language from other Wilderness Bills. (C) Wildlife- The Secretary shall allow for management of Fish and Wildlife in accordance with the guide set forth in Appendix B of the report of the committee on Interior and Insular affairs of the House of Representatives accompanying HR 2570 of the 101st Congress (H. 18 Rept. 101-405)
- Recommendation 4: Add in a section under management activities that would enable active management for fish, wildlife, and/or their habitats within Wilderness if it's in accordance with the relevant wilderness management plans. As one example see the text below from Lincoln County Conservation, Recreation, and Development Act of 2004.
- Management Activities.--In furtherance of the purposes and principles of the Wilderness Act, management activities to maintain or restore fish and wildlife populations and the habitats and/or improvements to support such populations may be carried out within wilderness areas designated by this title where consistent with relevant wilderness management plans, in accordance with appropriate policies, including the occasional and temporary use of motorized vehicles, if such use, as determined by the Secretary, would promote healthy, viable, and more naturally distributed wildlife populations that would enhance wilderness values and accomplish those purposes with the minimum impact necessary to reasonably accomplish the task.

Government & Legislative Affairs

Economic Development:

- Recommendation: Page 26 section 23. Consider additional language that would authorize funding for important fish and wildlife needs within the region. Specific examples include (1) funding to study and implement recreation improvements on the Owyhee River below Owyhee Dam, (2) funding for USGS, state agencies, and/or the Burns Paiute Tribe to study big game migrations, (3), funding to improve the management of Bighorn Sheep through the new Idaho/Oregon/Nevada state wildlife agency partnership, and finally, (4) funding to increase law enforcement personnel in the Owyhee.

Travel Management:

Over the past decade, the use of off highway vehicles in the Owyhee region has grown exponentially and a travel management plan for the Vale BLM has not been completed since 1976. The lack of an up-to-date travel management plan on these public lands has led to increasing problems related to illegal road development and disturbance to wildlife and wildlife habitat. This bill provides a rare opportunity to create a solid framework that would help implement responsible motorized travel plans within the planning area in order to balance continued motorized access and healthy landscapes. Our group recommends including a section on travel management within the bill to build a framework that sets out a timeline, process, and certain requirements to follow during the ensuing travel management process that would be guided by the Vale BLM office, the Malheur CEO Group, county officials and other stakeholders.

Wild Sheep Foundation Bi-Weekly Legislative Affairs Committee Calls – Larry Jacobs and Kevin Martin, both past Presidents, representing OR WSF continue to participate in these biweekly calls for the WSF.

Bighorn Advocates Monthly Calls - Larry Jacobs, Vic Coggins, and Kevin Martin representing OR WSF continue to participate in these monthly calls with bighorn sheep advocates from across the country.

Oregon Sportsmen Conservation Partnership:

OR WSF is an active member in this statewide partnership. Together, as a member of Oregon Sportsmen Opposed to Gun Violence, we actively opposed Ballot measure 114. We are now part of the sportsmen organizations who are fighting this attack of hunting and shooting in court.

There are several issues of concern; it requires a currently nonexistent perming system to purchase firearms, creates a searchable database housing all permit holder's information, has an enormous financial burden, and would outlaw all firearms that can hold 10 or more rounds in internal chambers/tubes. Because the permitting system will need to be created and implemented before any permits can be issued, it would effectively stop all firearms purchase until the system could be put into place, that could be years. This is not common-sense gun control and will not reduce criminal gun violence.

December 13, 2022 - Chair Wahl, Commissioners, Director Melcher – Petition to prohibit coyote contests.

In response to the petition recently received by the Oregon Department of Fish & Wildlife requesting the Commission to prohibit coyote contests, OR WSF joined with other organizations of the Oregon Sportsmen Conservation Partnership to urge the Commission to deny this request as it is outside the bounds of the Commission's authority.

A similar request has gone before the legislature three times and been denied each time. This topic has been thoroughly vetted through the legislative body and has not been passed into law. The petitioner's request to the Commission to now undertake rulemaking on the issue is circumventing the authority of the legislature and is a request to the Commission to act outside their statutory scope of authority.

Government & Legislative Affairs

The Commission's authority encompasses the regulation of times, places, and amounts of take regarding wildlife and wildlife management. While ORS 496.162 (3) clearly states that the Commission does not have the authority to regulate the times, places, and amounts regarding predatory animals, the fact remains that the Commission does not possess the authority to regulate the motivation, or 'why', of hunting or controlling predatory animals.

Contest structures, whether as a fishing derby or a sanctioned competition regarding antler size, are one of many reasons a person may engage in hunting or assisting in predator control efforts. The Commission must acknowledge its lack of authority over an individual's motivation and must also carefully consider the precedents that may be established in the banning of a contest structure, as well as the act of taking authority over predatory animals when that authority has been expressly granted to Oregon Department of Agriculture by the legislature.

Juniper Cut Project

Shane Byerly– Oregon WSF Board Member & Banquet Chair

February 26, 2023 – Juniper Cut at the Phillip W. Schneider Wildlife Area

In late February, 17 volunteers from the Oregon Department of Fish and Wildlife (ODFW) and the Oregon Wild Sheep Foundation braved a winter storm to arrive at the Phillip W. Schneider Wildlife Area (near Dayville, Oregon) for the annual juniper cut, after a two-year hiatus due to covid-related issues.

The target area for cutting is a section of winter range habitat used by the Aldrich Mountain bighorn sheep herd, as well as by mule deer. The goal of the juniper cut is to reduce cover for large predators, improve water availability, and allow native grasses and plants to return to the area.

Most of the crew arrived Friday before the cut, spending the night in the wildlife area's maintenance shop. The next morning, we were treated to a king size takeout breakfast from the Dayville café that was delicious – a big thanks to Jake and Joe of ODFW for the culinary arrangements.

We arrived at the cut area a bit later and received our annual chain saw safety class from Mark. Since everyone in attendance was a returning cutter, that instruction did not take too long. After selecting the saws we would use for the day and donning safety gear, we all trudged up the hill to the targeted patch of juniper trees.

The day went well and by lunchtime we had made some progress and learned once again why most of us are not timber fallers – the work is hard and uses muscles which lie dormant for most of us.

Once again Jake and Joe had outdone themselves with meal, picking up sandwiches and french fries from the café (thanks again!), the only problem was it seemed like nap time after lunch.

We headed back up the hill and resumed cutting, by the end of the day we had cut approximately 15 acres of junipers and most of us were whipped as we headed back for the shop.

After getting revived by a shower we were treated to a barbecued hamburger meal by Jake and Joe, the rest of the evening consisted of relaxation and tales of the past.

Thanks to our ODFW friends for hosting the event and providing the culinary excellence, and thanks to our Oregon Wild Sheep Foundation WSF project coordinator Larry Jacobs for organizing the cut.



VOLUNTEERS NEEDED!

The Idaho, Oregon, and Nevada (ION) Partnership is assisting ODFW with a Saturated Bighorn Sheep Ground Count in the Lower Owyhee herd range.

We need 40 groups of people willing to survey bighorn habitat on May 20th, 2023. A group can be one person surveying alone or more than one working as a team. Most of the survey units are very remote so you'll probably need to arrive in the general area on May 19th, survey on the 20th and head home on the 21st.

We have a PDF file of a power point presentation which gives more details and we can email it to interested volunteers.

Oregon Wild Sheep Foundation (OR WSF) and ODFW have a grant from the Wild Sheep Foundation (WSF) to reimburse people for their mileage. You will need a 4WD vehicle to access all the survey units and some will require ATV/UTV's or boats. Once we have a list of interested volunteers we will select/assign survey units, provide instructions how to get to each, and work out any other details.

If interested, please contact Craig Foster (OR WSF) at clfoster219@gmail.com or 541-219-9202. He will ask you how many people might be in your group, an email address and phone number for your group leader, and whether you have the ability to provide off-road vehicles or a boat for your group.



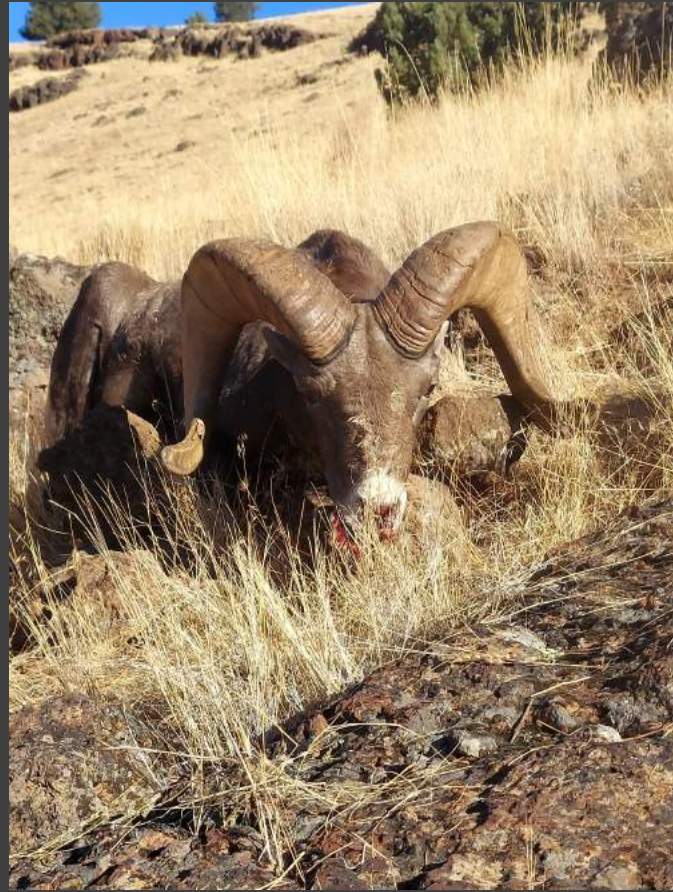
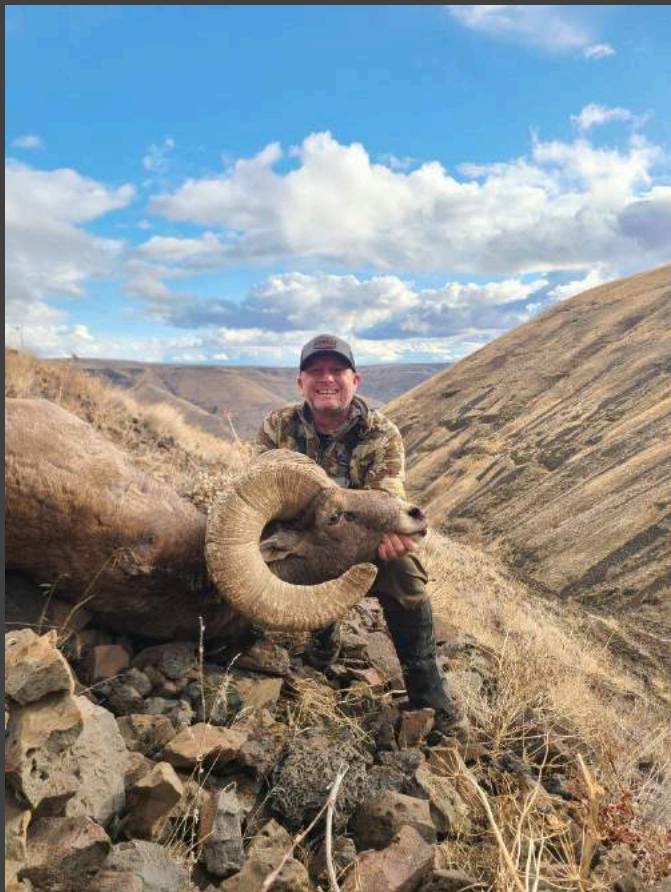
10-Day Dall Sheep Hunt in the NWT

additional info: www.oregonfnaws.org

SCAN FOR TICKETS

Hunt Raffle!
700 tickets sold
Raffle drawing April 29th, 2023
Hunt Dates: July 15-24, 2024
\$100 per ticket
Purchase tickets: www.oregonfnaws.org

Successful 2022 Tag Holders



Upcoming Events

April 29 2023: OR WSF Annual Banquet

April 30 2023: Spring Board Meeting

May 19th – 21 2023: Lower Owyhee Ground Count

June 15-17 2023: Chapter and Affiliates South Dakota

July 15th 2023: Wild Sheep and Mtn Goat Orientation

July 15th 2023: 3rd Annual Mountain Hunter's Rendezvous

July 16th 2023: 2023 Summer Board Meeting

New Life Members

210. Brenton Scott

211. Matthew Mellon

212. Richard Mellon

213. Jeff Goodwin

214. Carl Phillips

216. David Alvarez

218. Jacob Brundridge

219. Larry Johns

Membership and Renewals

Navigating through many trying times we want to take a moment to thank all of our current annual and life members. Without your support we would not be able to assist and advocate for wild sheep in the state of Oregon. As most of you may know we have changed the way we accept new memberships and renew annual members. If you are an annual member and you have not renewed through our website we would urge you to go through the renewal process there. We are working away from paper renewals and increasing our active members through the website. Online renewals ensures we have up to date information for all members and assists in the ability to contact members to inform them on upcoming events, newsletters, and our annual banquet.

Info@OregonFNAWS.org

www.OregonFNAWS.org

Facebook: www.facebook.com/ORWSF

Instagram: @OregonWildSheepFoundation



OREGON



WILD SHEEP[®]

Foundation